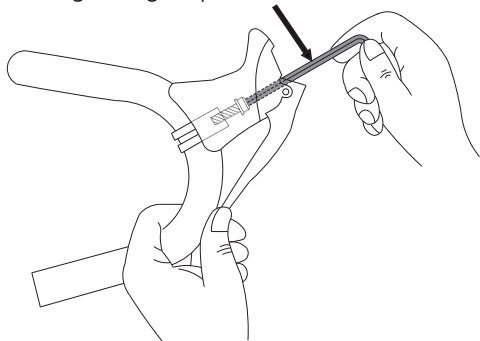


DROP BAR BRAKE LEVER

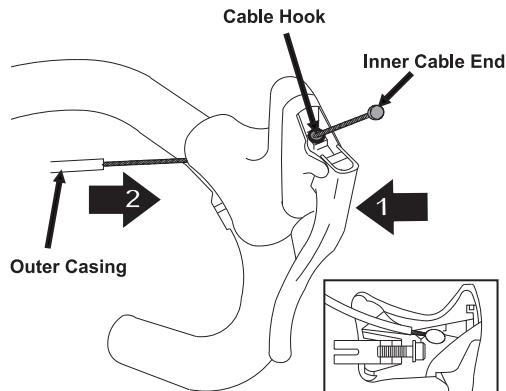
1) Depress the brake lever to expose the mounting bolt and using a 5 mm Allen key loosen the mounting bolt until the band clamp is loosen enough to slide over the handlebar. Slide the lever into position on the handle bar and tighten the mounting bolt. Final tightening torque should be 6-8Nm.

5mm Allen key

Final tightening torque: 6-8Nm



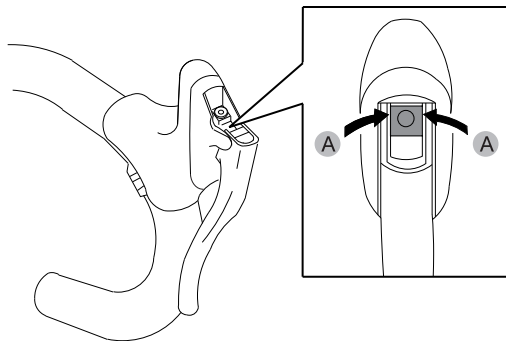
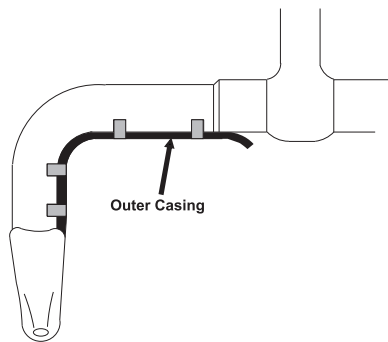
2) Insert the brake cable into the cable pull and through backside of the lever. Insert the cable into the housing and push the using firmly into back of the brake lever until it is seated firmly in the housing stop.



3) Provisionally secure the housing to the handlebar using electrical tape or something similar. With the housing in place on the handlebar cut the housing to the proper length. For the rear brake, be sure to allow enough room for the handlebars to turn all the way to the left and right without pulling on the cable.

4) Attach the cable to the brake following the brake manufacturer's instructions. Depress the lever a few times to be certain the cable and housing are properly seated before making final adjustments.

Note: Lubricate the A position if a squeaking noise occurs after a long period of use.



⚠ WARNING

- It requires practice at slow speeds before normal use.
- If you are unsure about any part of the installation and set up of these levers, consult a qualified mechanic or your local bike dealer.
- Tektro is not liable for damage or injury as a result of improper installation or use.

TEKTRO

BRAKE SYSTEMS

Tektro Technology Corporation
 Web site: www.tektro.com E-mail: info@tektro.com.tw
 Edition - Jan. 2010 Made in Taiwan